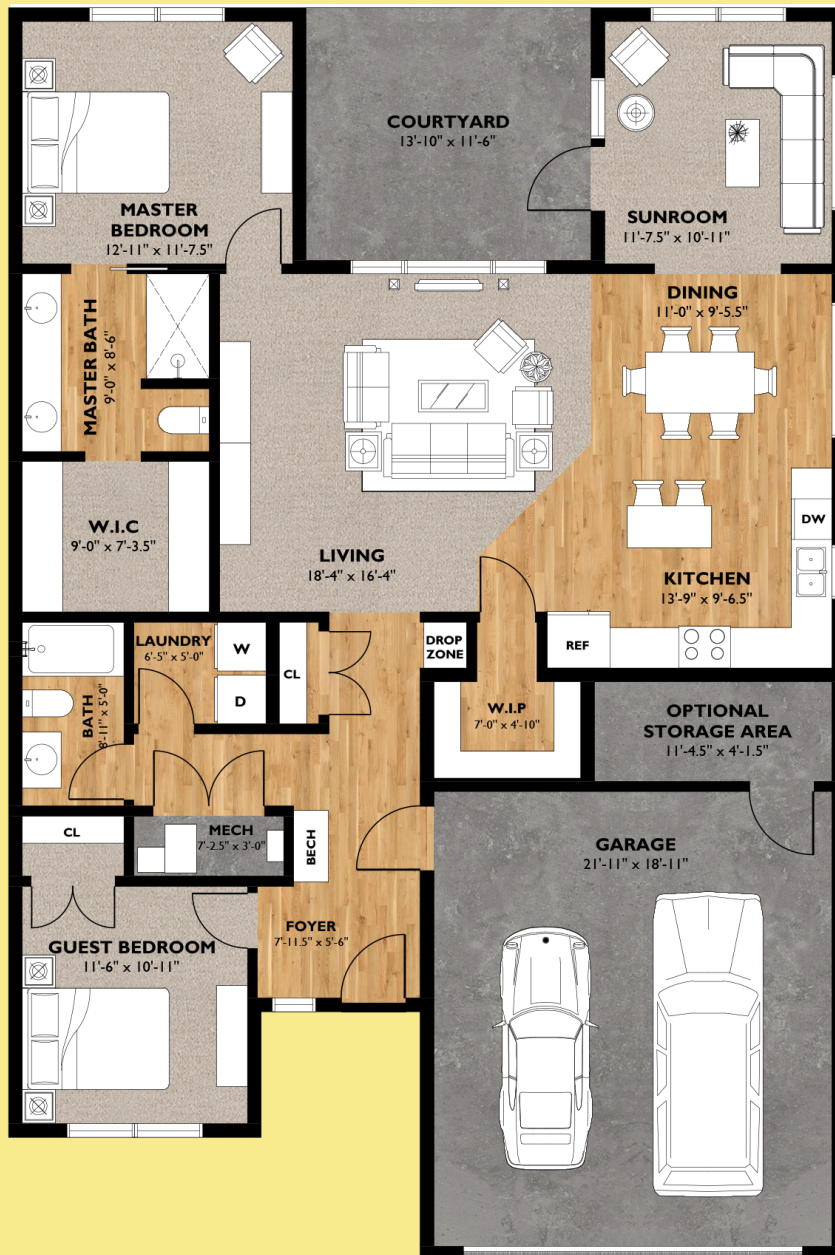


## Courtyard Series - H2



- Appr. 1,542 sq.ft.
- 2 Bedrooms, 2 Full Baths
- 4 Seasons Sun Room
- Private Courtyard
- Additional Storage in Two Stall Garage
- 2x6 Exterior Walls
- 9' Ceilings Throughout
- Granite Counter Tops Throughout (Optional Quartz)
- Zero Step Entry

**HIGHLANDS**  
AT CUMBERLAND RIDGE  
CONDOMINIUMS  
Lowell Township, MI

Every square foot of this plan is beautifully designed for maximum impact. Bright and wide open with an intimate four season sun room and private courtyard. The Courtyard Series-H2 is both smart and beautiful.

## Courtyard Series - H2

PLEASE NOTE: This is an Artistic rendering and subject to change. Plans, prices and specifications are subject to change at any time with out prior notice.



Real Estate Sales • Land Development  
Call Steve Hanson at  
616.291.2668  
We buy homes & land for cash